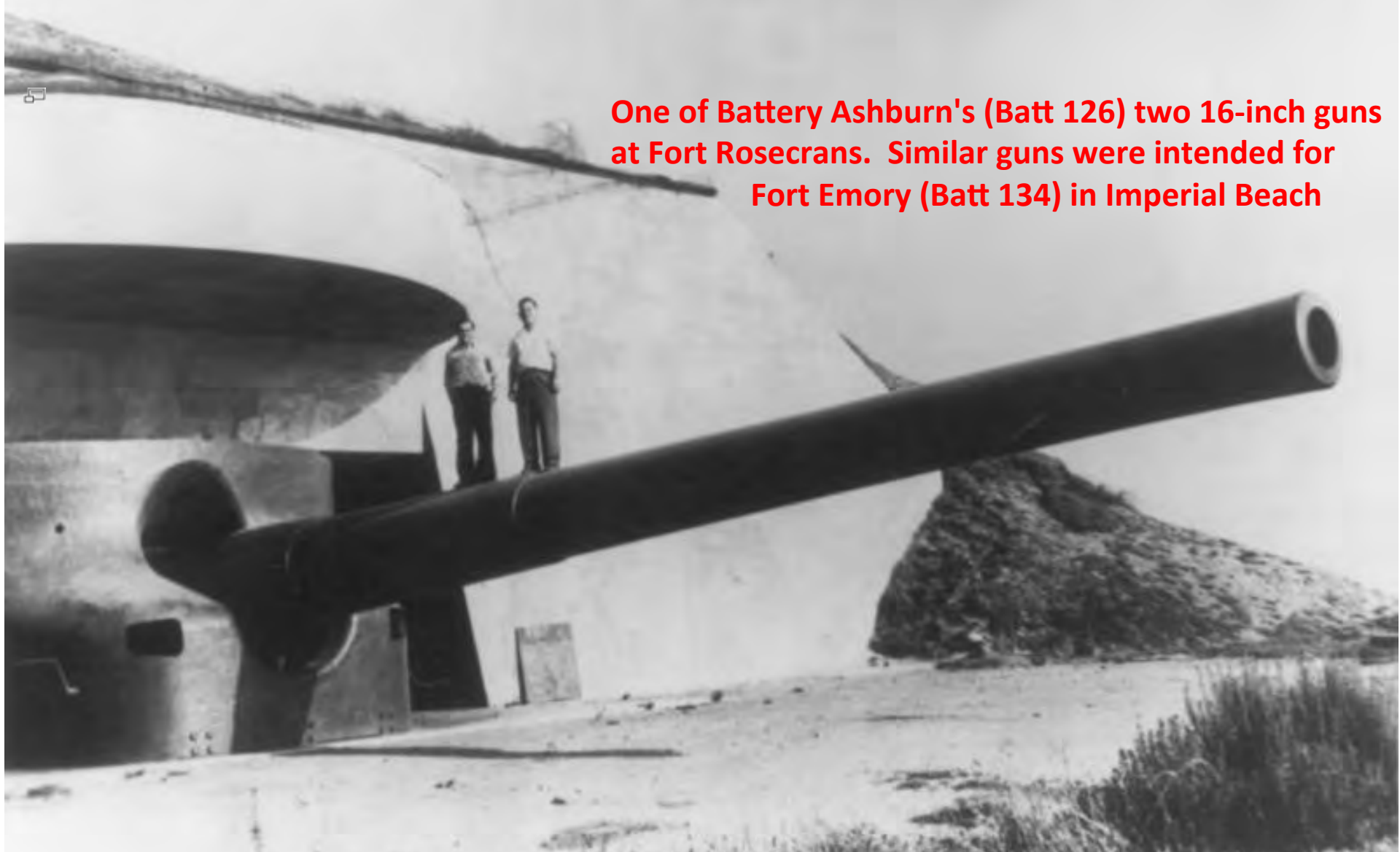


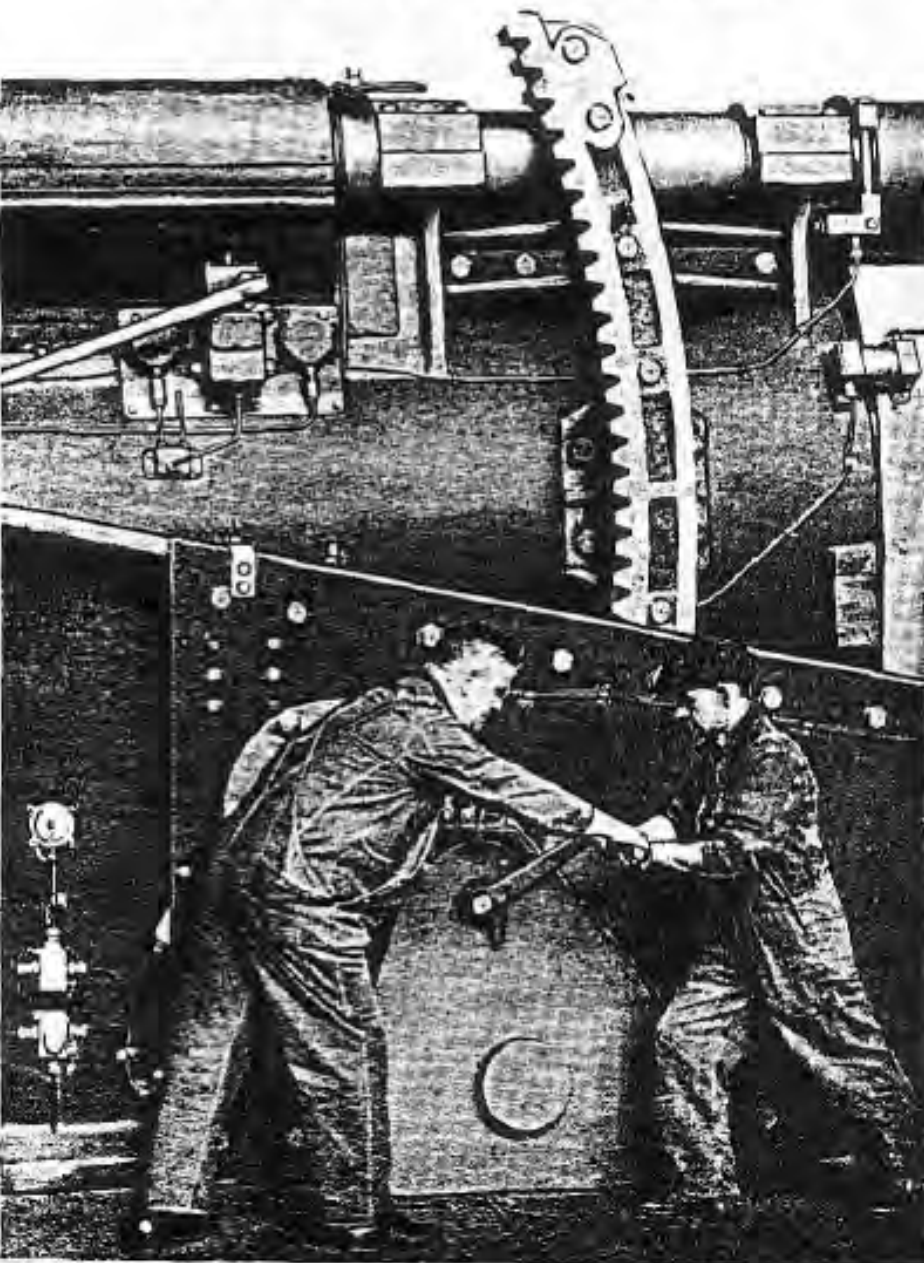
One of Battery Ashburn's (Batt 126) two 16-inch guns at Fort Rosecrans. Similar guns were intended for Fort Emory (Batt 134) in Imperial Beach

One of Battery Ashburn's (Batt 126) two 16-inch guns at Fort Rosecrans. Similar guns were intended for Fort Emory (Batt 134) in Imperial Beach



Battery 126 was a battery of two, 16" [MarkII-M1](#) naval guns casemated in an earth covered reinforced concrete support structure. Two sets of powder and shell rooms inside the concrete support structure formed the magazines and were on the same level as the guns. Powder and shells were moved from the magazines to the gun loading platforms by an overhead rail and hoist system or by shot carts. The guns were traversed and elevated by electrical motors. Electrical power was furnished by three internal generator sets and commercial power. The gun tubes were mounted in March 1944 but the gun shields did not arrive until early 1945. The guns were proof fired in July 1944 without the shields. **The battery was declared surplus in May 1948. The guns and the shields were scrapped.**

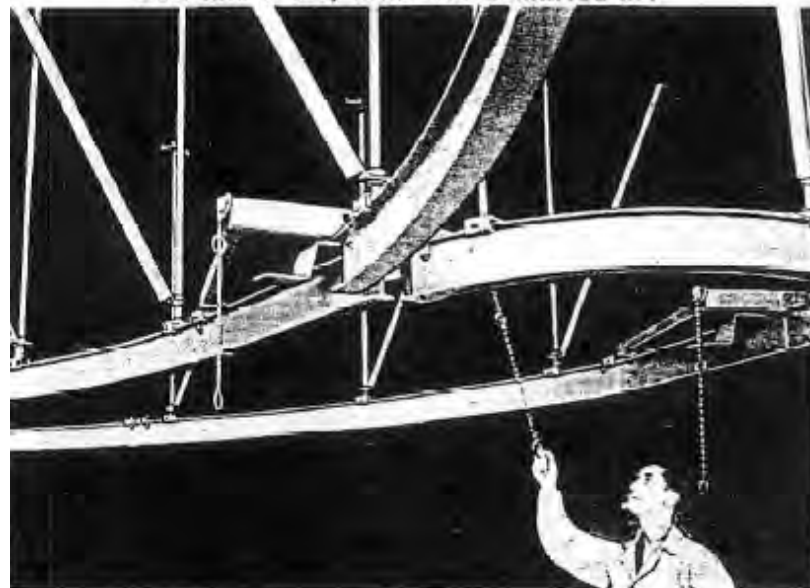
**16-INCH SEACOAST GUN MATERIEL
GUN MK. II M1; BARBETTE CARRIAGE M4**



RA PD 3881

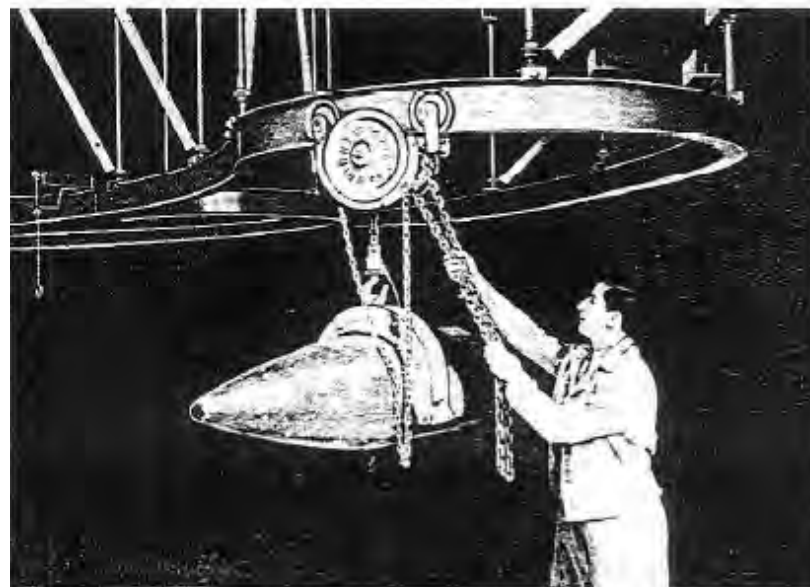
Figure 136—Operating Elevating Crank

**16-INCH SEACOAST GUN MATERIEL
GUN MK. II M1; BARBETTE CARRIAGE M4**



RA PD 38803A

Figure 145—Operating Switch in Overhead Trolley



RA PD 38803

Figure 145-1—Hoist on Overhead Trolley with Dummy Projectile

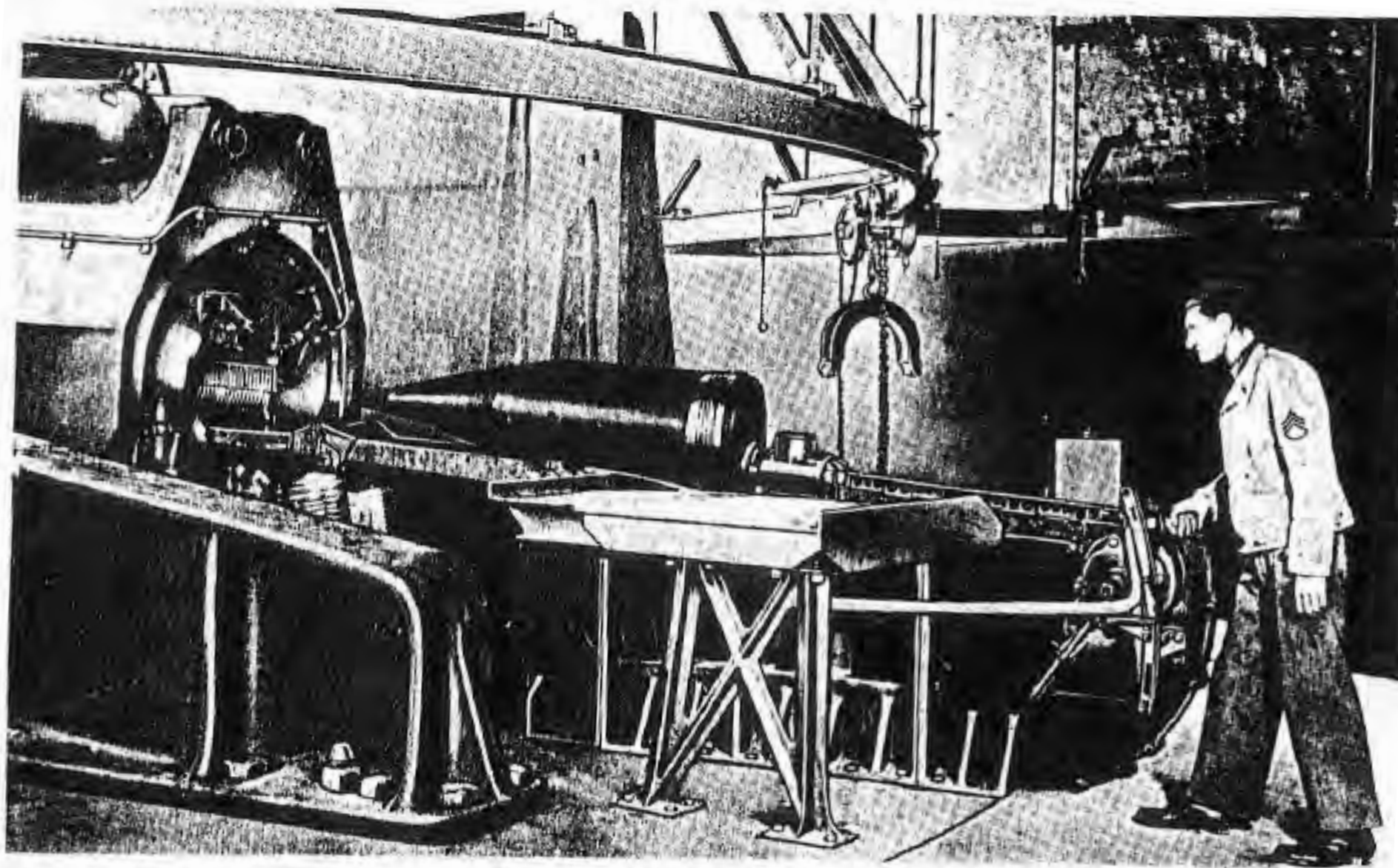
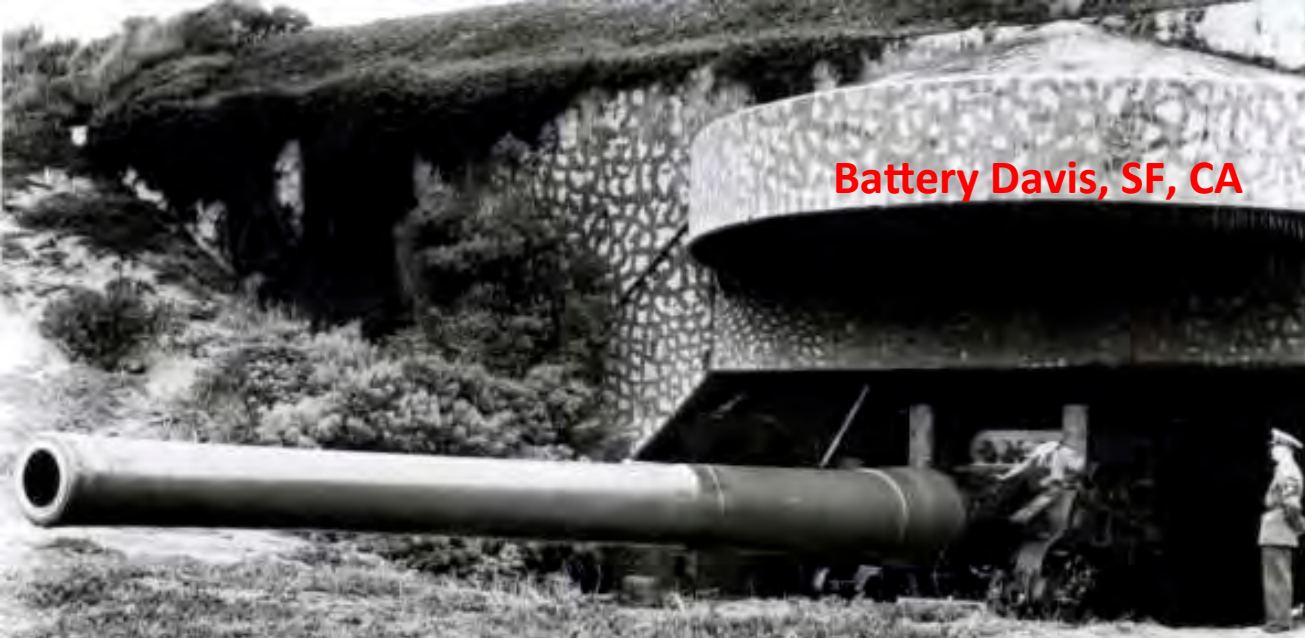


Figure 146—Loading by Power



16" battery protecting Puget Sound, similar in design to Building 99.
[Lewis, Seacoast Fortifications, (Annapolis: Naval Institute Press, 1979), 121]



Battery Davis, SF, CA



16" Navy MkIIIM1 gun on M1919 barbette mount in Panama

16" Mk III gun at US Army Ord Museum, Aberdeen,



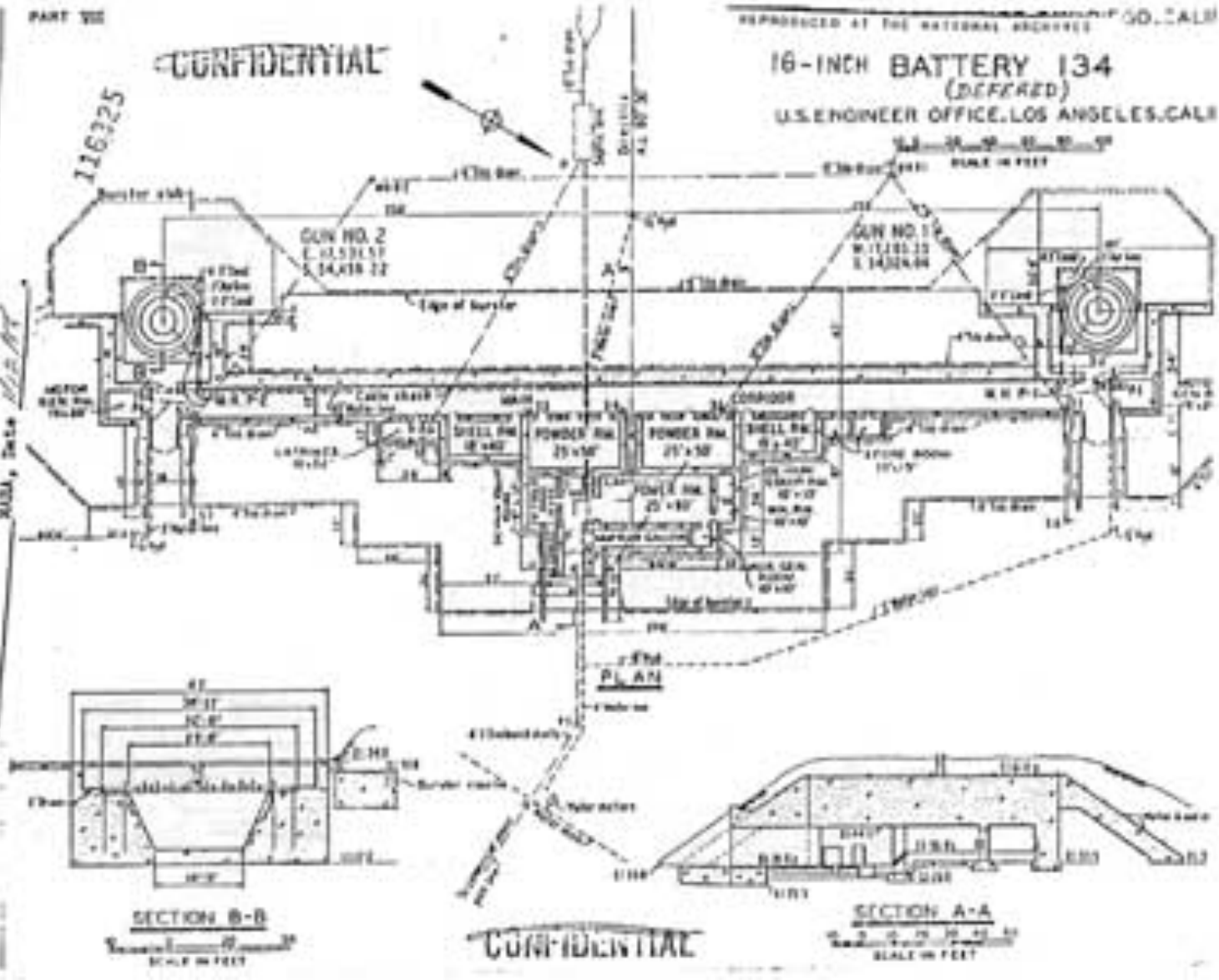
16" in New York

CONFIDENTIAL

16-INCH BATTERY 134 (DEFERRED)

U.S. ENGINEER OFFICE, LOS ANGELES, CALIF.

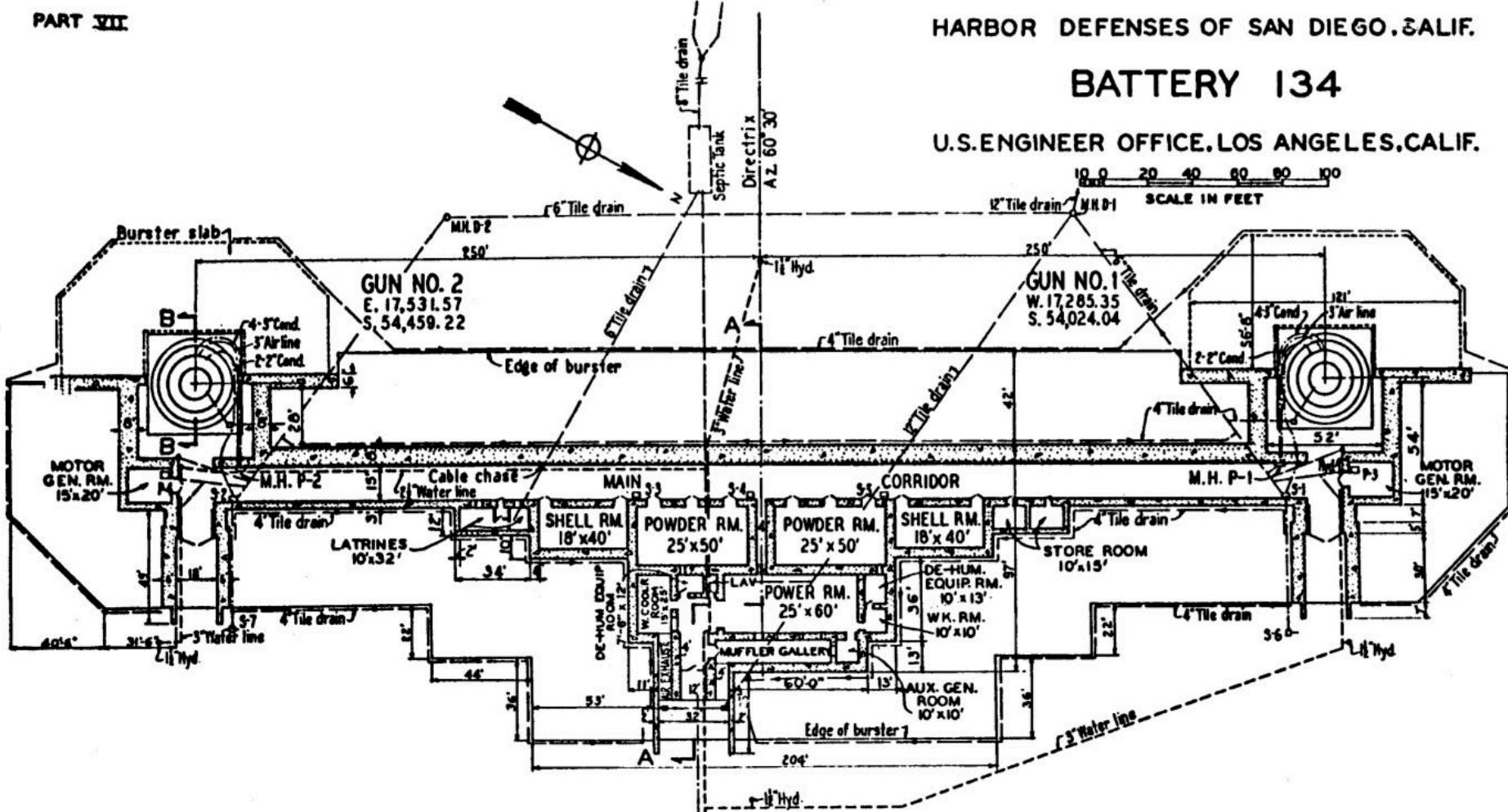
DECLASSIFIED FOR EXECUTIVE ORDER 12356, Section 3.3, 2350.16
By 2501
XUSA, Date 11/11/01



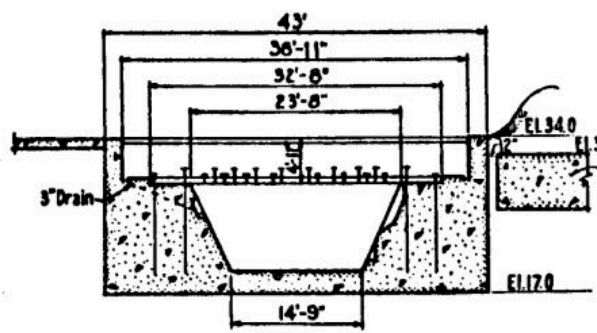
Battery Construction No. 134, Fort Emory (Bld 99 at the SSTC, Imperial Beach) . Its 16-inch guns were never mounted. The War Department deferred further construction inasmuch as danger of a Japanese invasion disappeared toward the end of World War II.

BATTERY 134

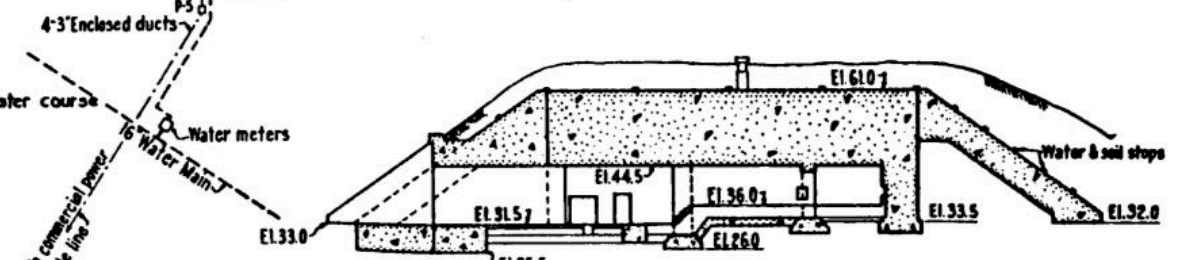
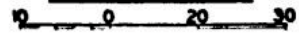
U.S. ENGINEER OFFICE, LOS ANGELES, CALIF.



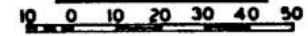
PLAN



SECTION B-B



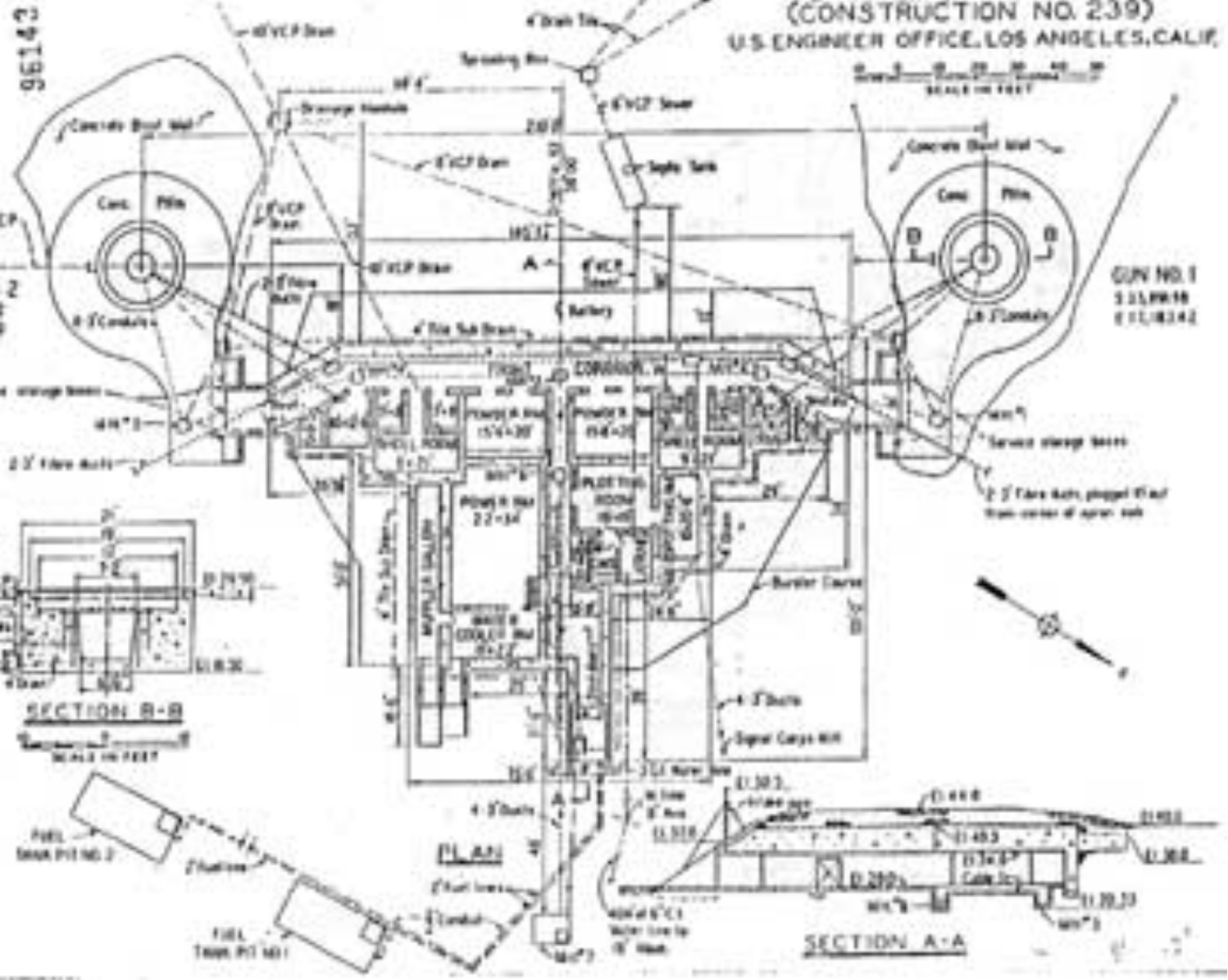
SECTION A-A



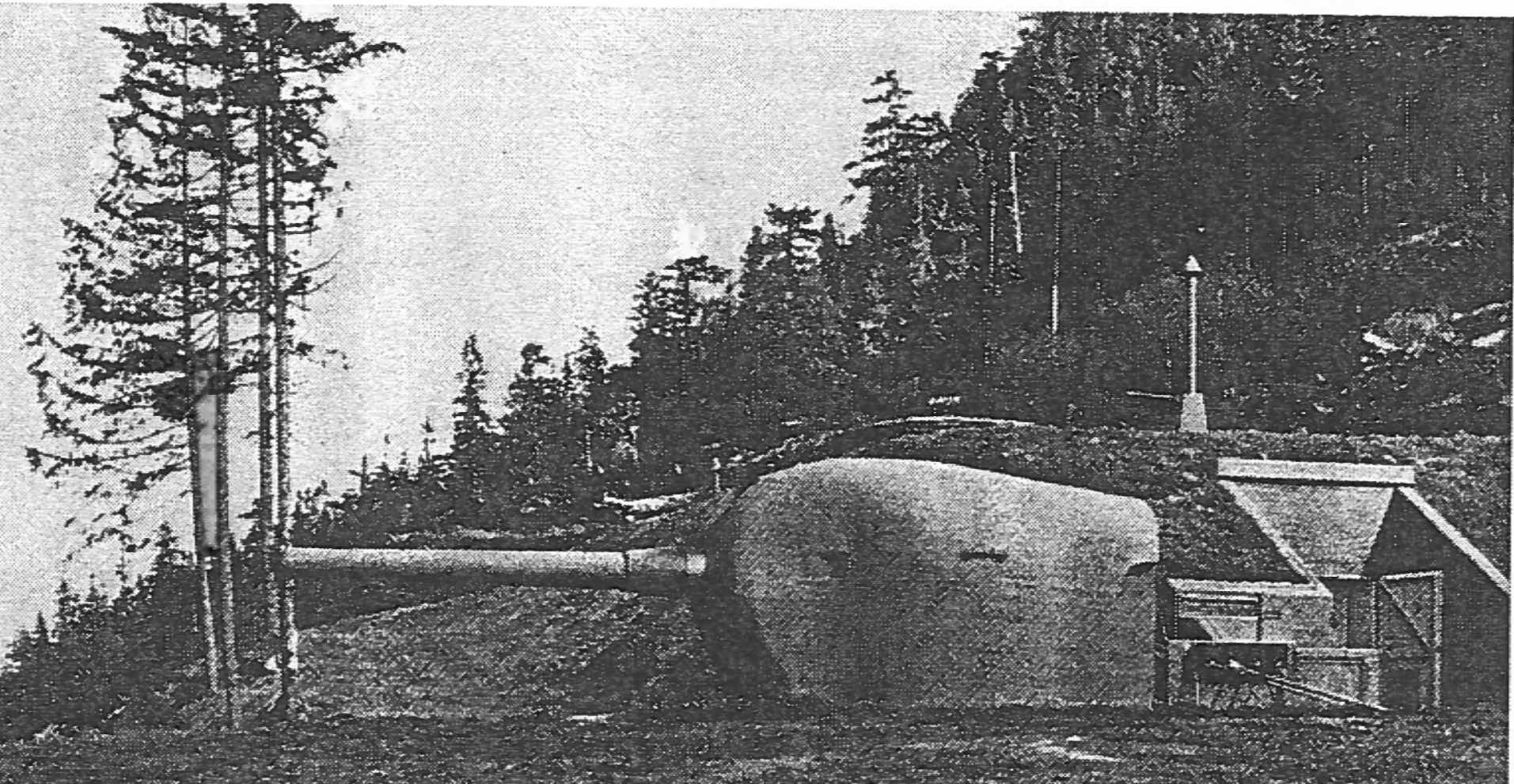
CONFIDENTIAL

REPRODUCED AT THE NATIONAL ARCHIVES
G-7524 ARMY BATTERY
(CONSTRUCTION NO. 239)
U.S. ENGINEER OFFICE, LOS ANGELES, CALIF.

DECLASSIFIED PER EXECUTIVE ORDER 12356, Section 3.3, 725016
By *VSJ*
NADA, Date *11/11/01*



Battery Grant, Fort Emory, two 6-inch guns.



6" Battery protecting Puget Sound, similar in design to Battery Grant at Fort Emory, Imperial Beach

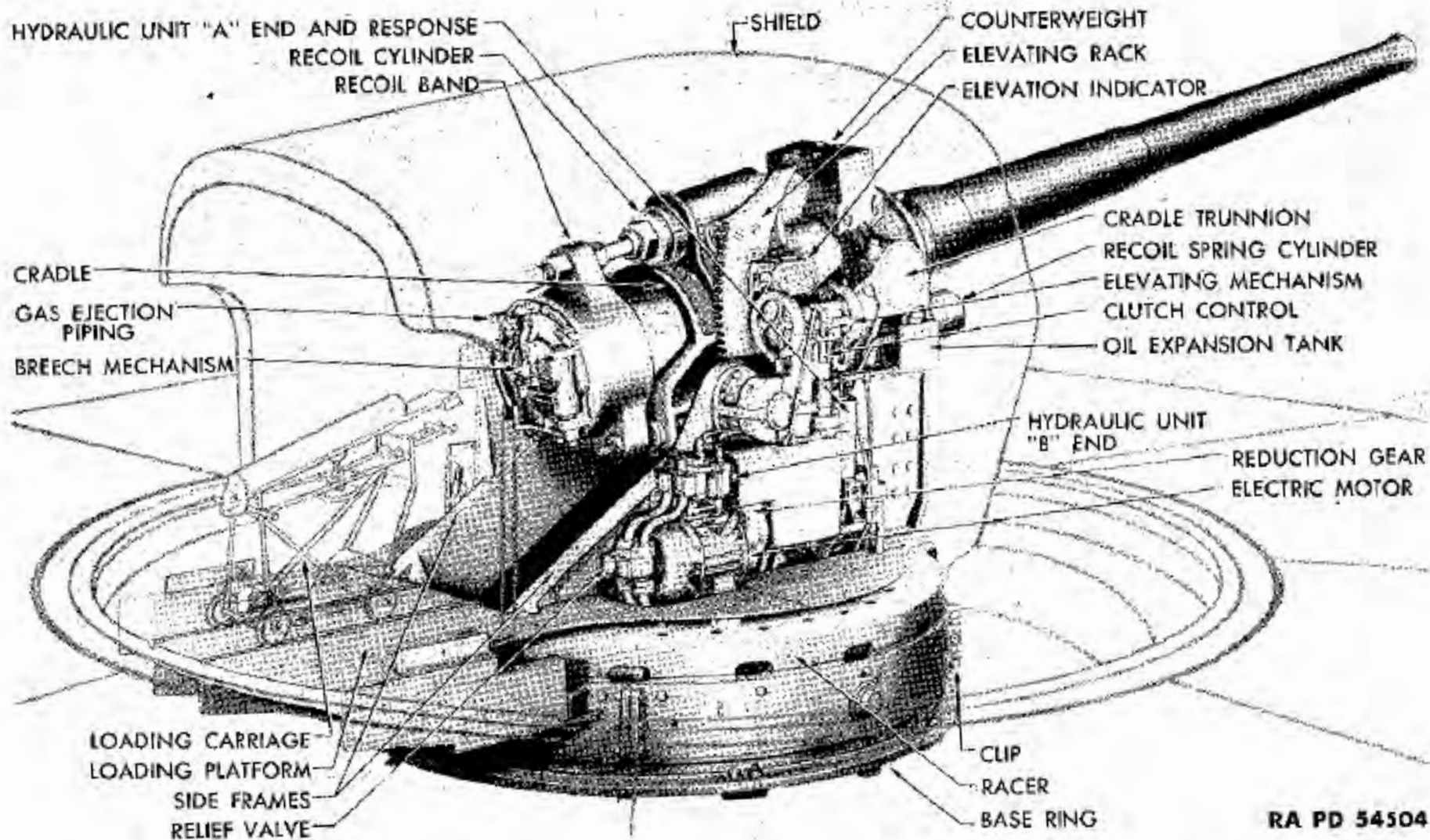
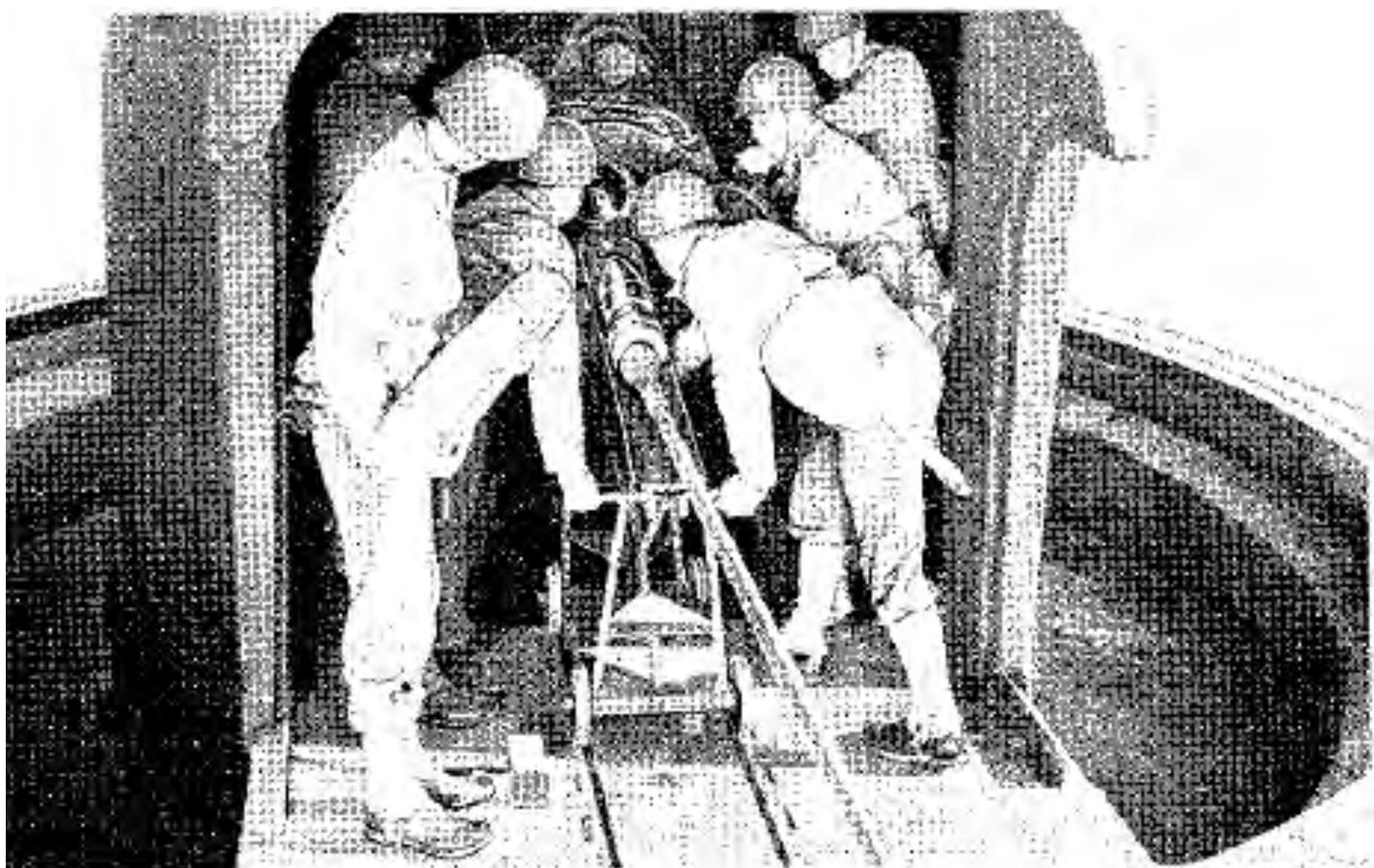


Figure 2—6-Inch Gun M1903A2 and Barrette Carriage M1—Right Rear



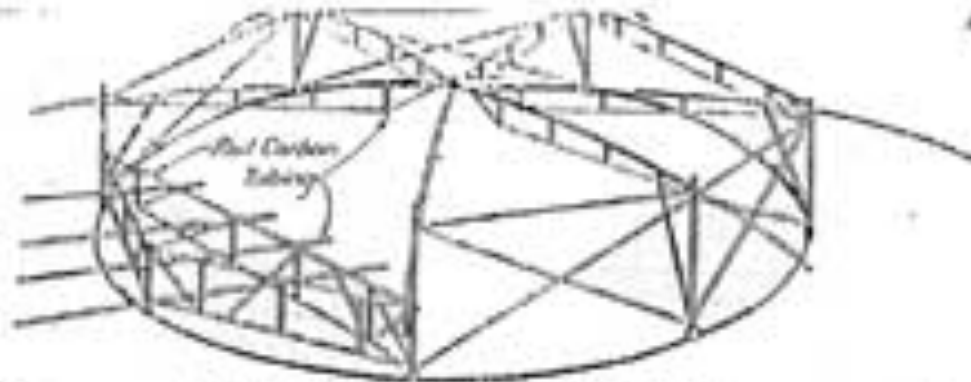
RA PD 54541

Figure 40 – Projectile and Powder Charge Preparation

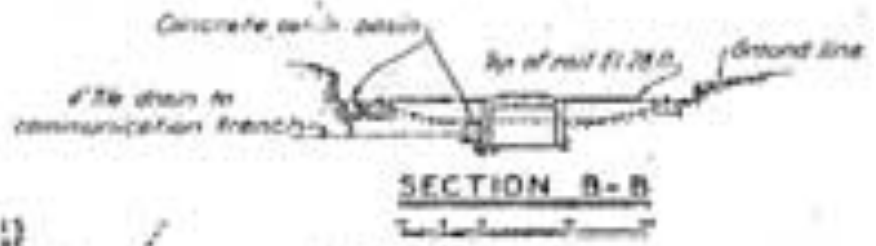


RA PD 54543

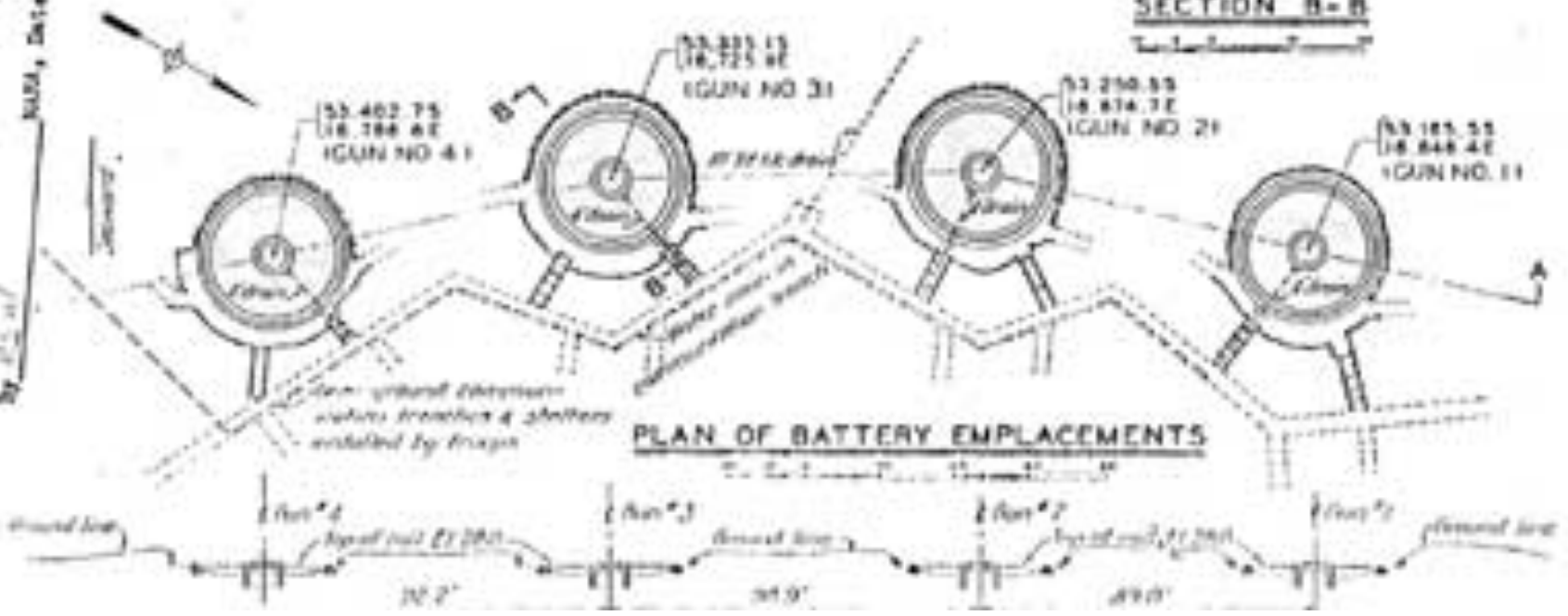
Figure 42—Firing the Gun



TUBULAR STEEL "UMBRELLA"
 CAMOUFLAGE SUPPORT
 & INSTALLED



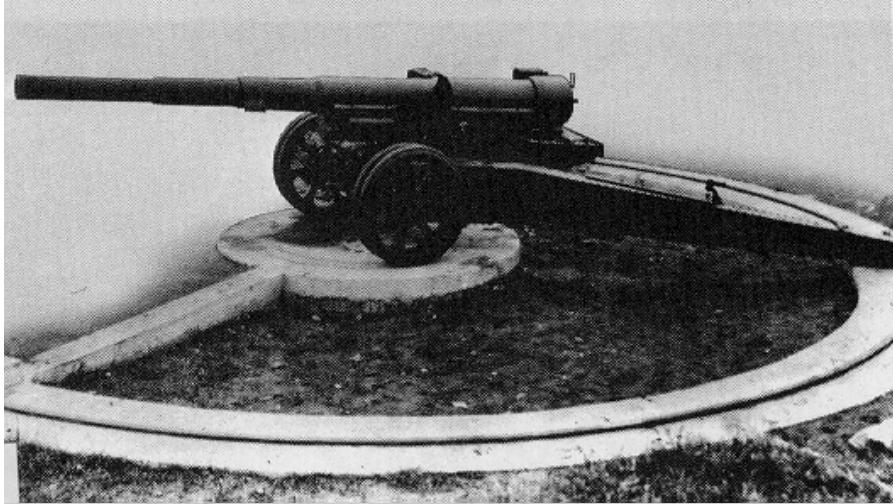
DECLASSIFIED FOR EXECUTIVE ORDER 12356, SECTION 3.2, 2/28/96
 BY SP-6 JRS/ML Date 11/11/07



PLAN OF BATTERY EMPLACEMENTS

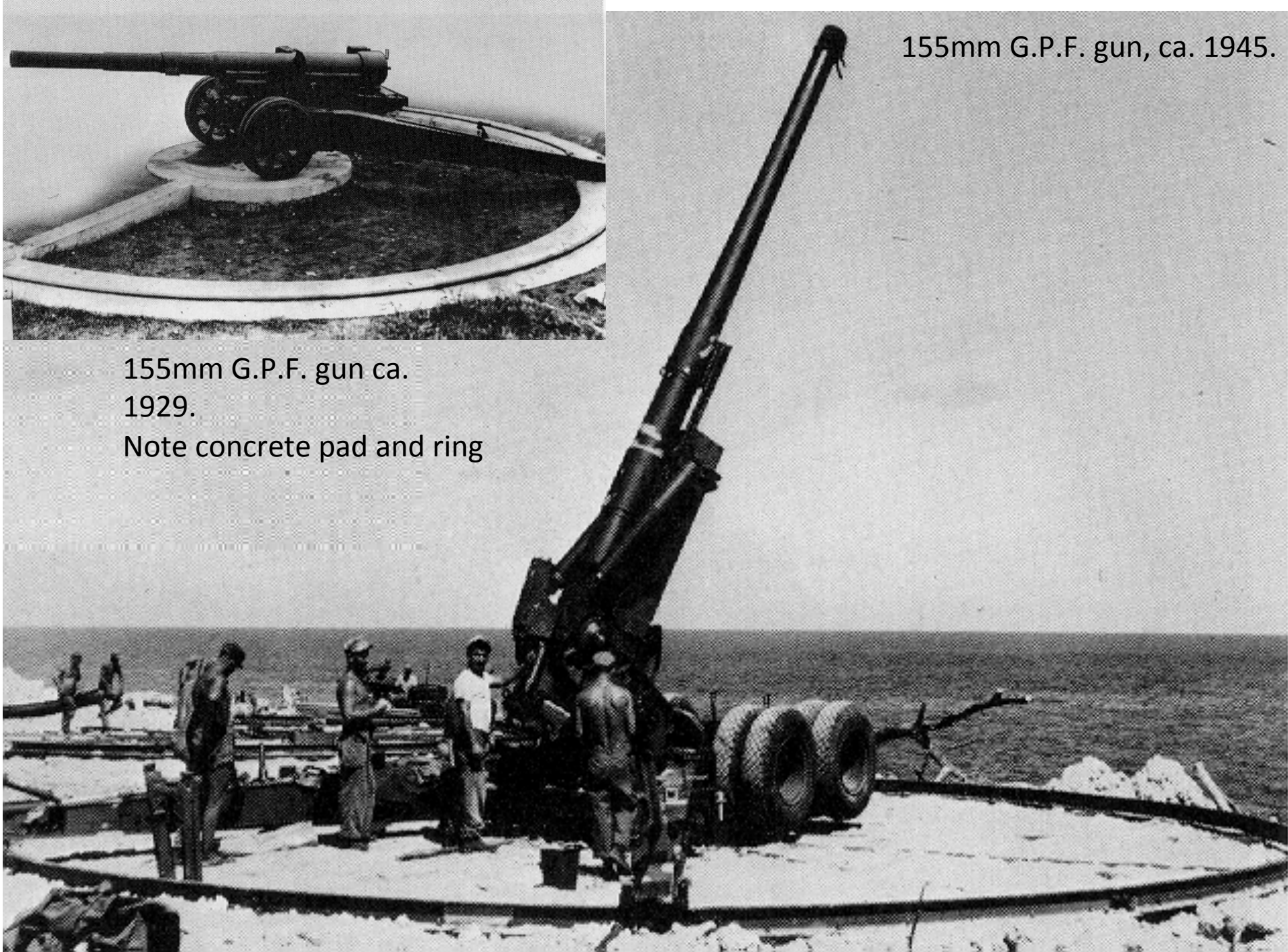
Battery Imperial, Fort Emory, four 155mm guns.

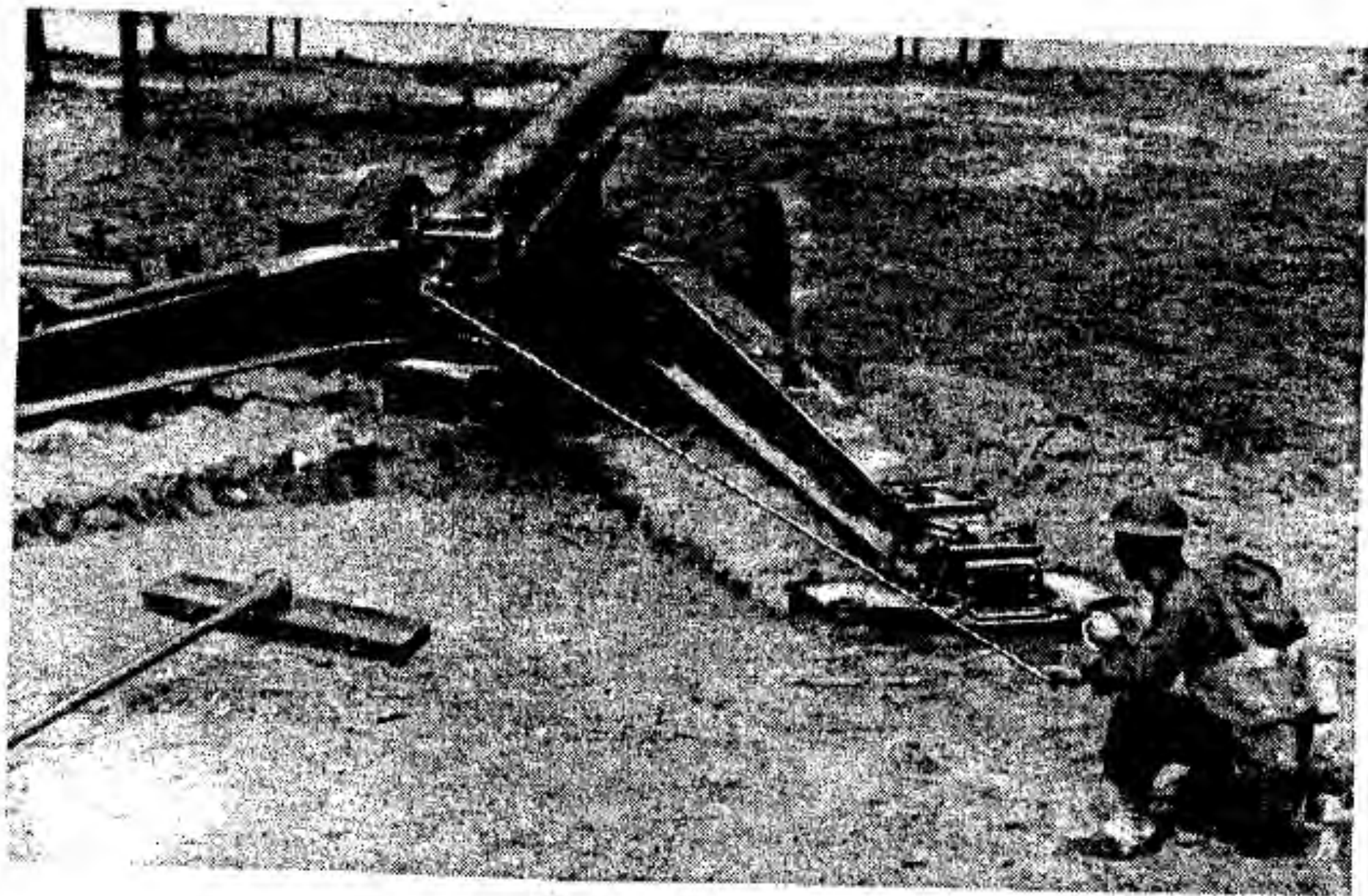
These guns were not emplaced on the Panama mounts until after Pearl Harbor.



155mm G.P.F. gun ca.
1929.
Note concrete pad and ring

155mm G.P.F. gun, ca. 1945.





RA PD 37649

Figure 85—Firing the gun