

Submarine S-37 as plotted on Google Earth (bow 32.36.244 / 117 08.238, stern 32 36.260 / 117 08.208)



Submarine S-37 as plotted on Google Earth
(bow 32.36.244 / 117 08.238, stern 32 36.260 / 117 08.208)



At low tide, S-37 can be seen on Google Earth

IVER S-37 (SS-142) CONOP

32.6040667N, 117.1373000W

Who: SA-1 METOC

What: IVER Training

When:

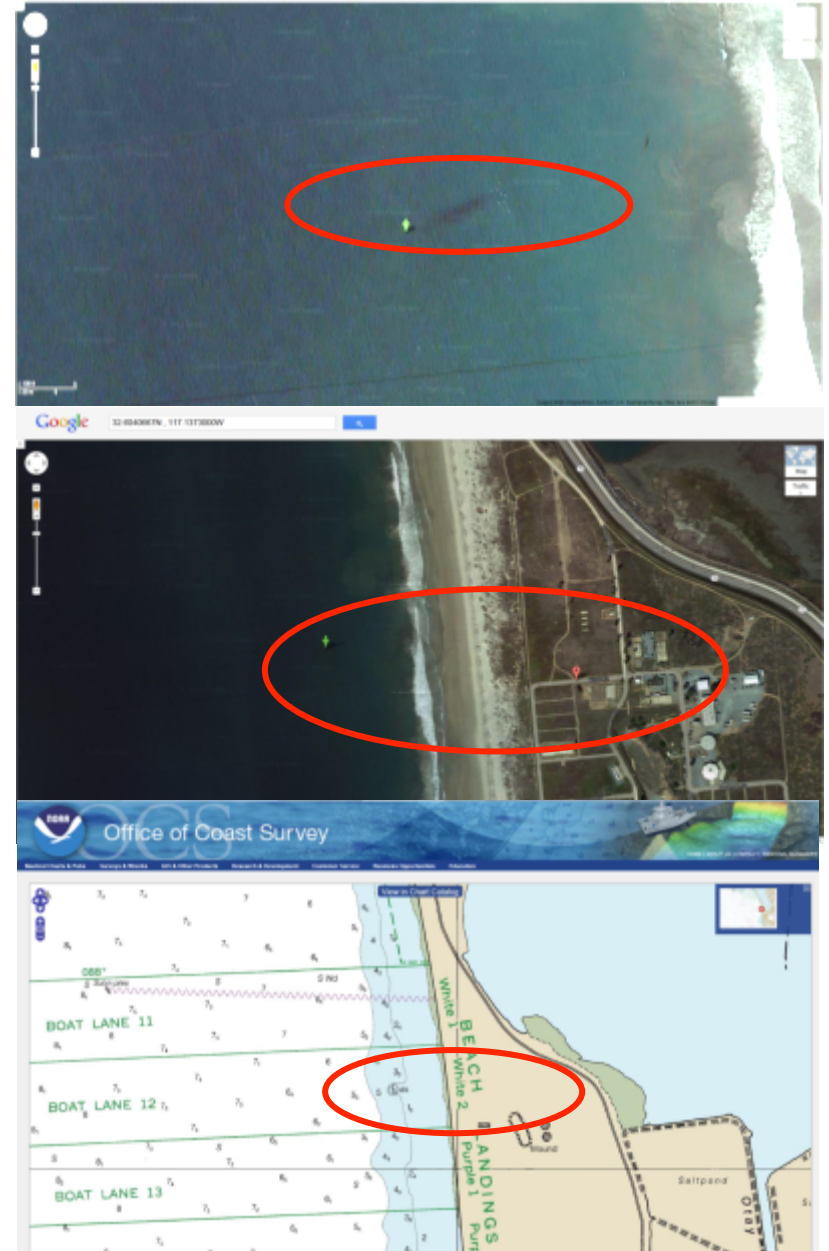
Where: Adjacent Silver Strand Training Complex (SSTC)

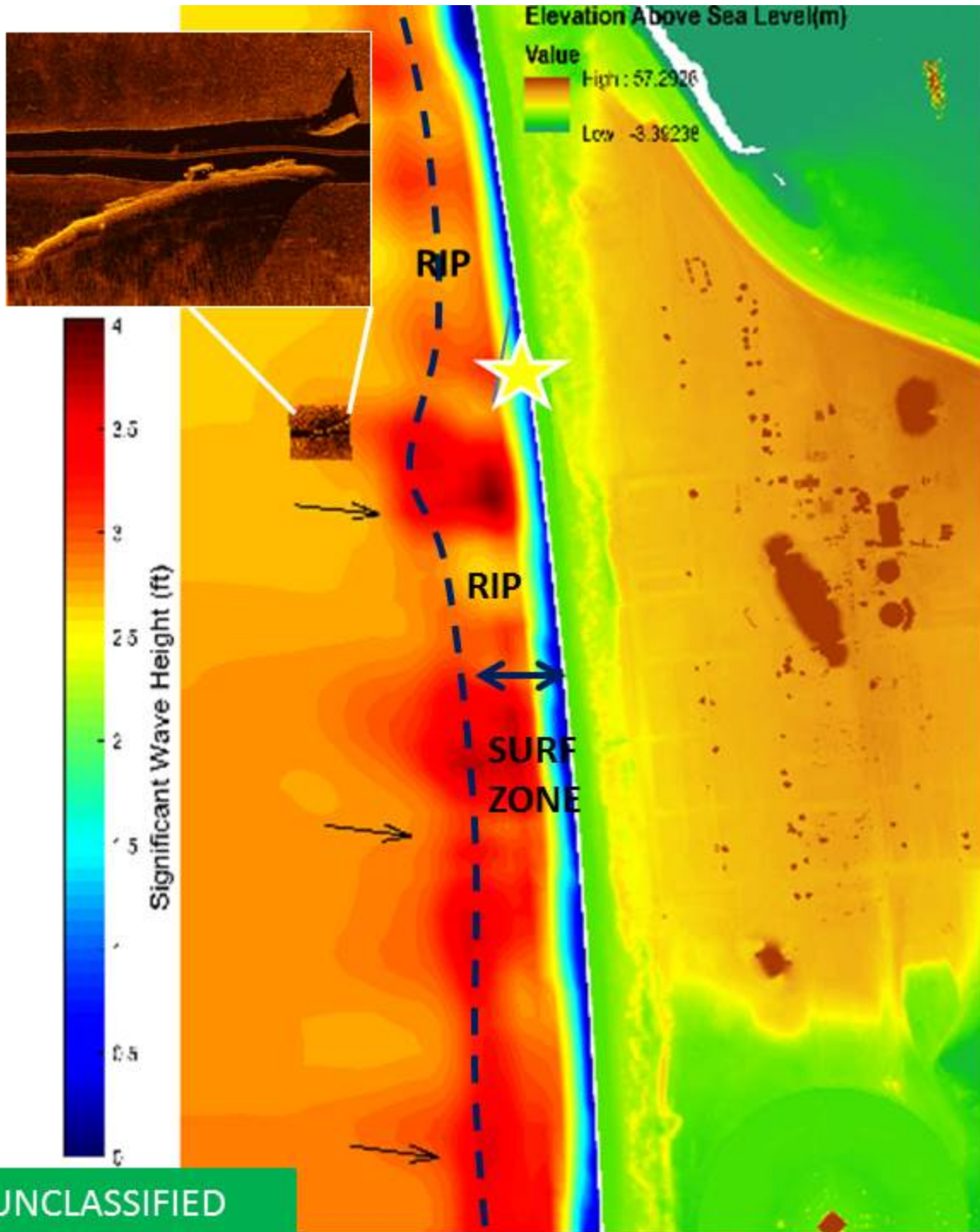
Why: IVER training over the S-37 (SS-142) submarine wreck

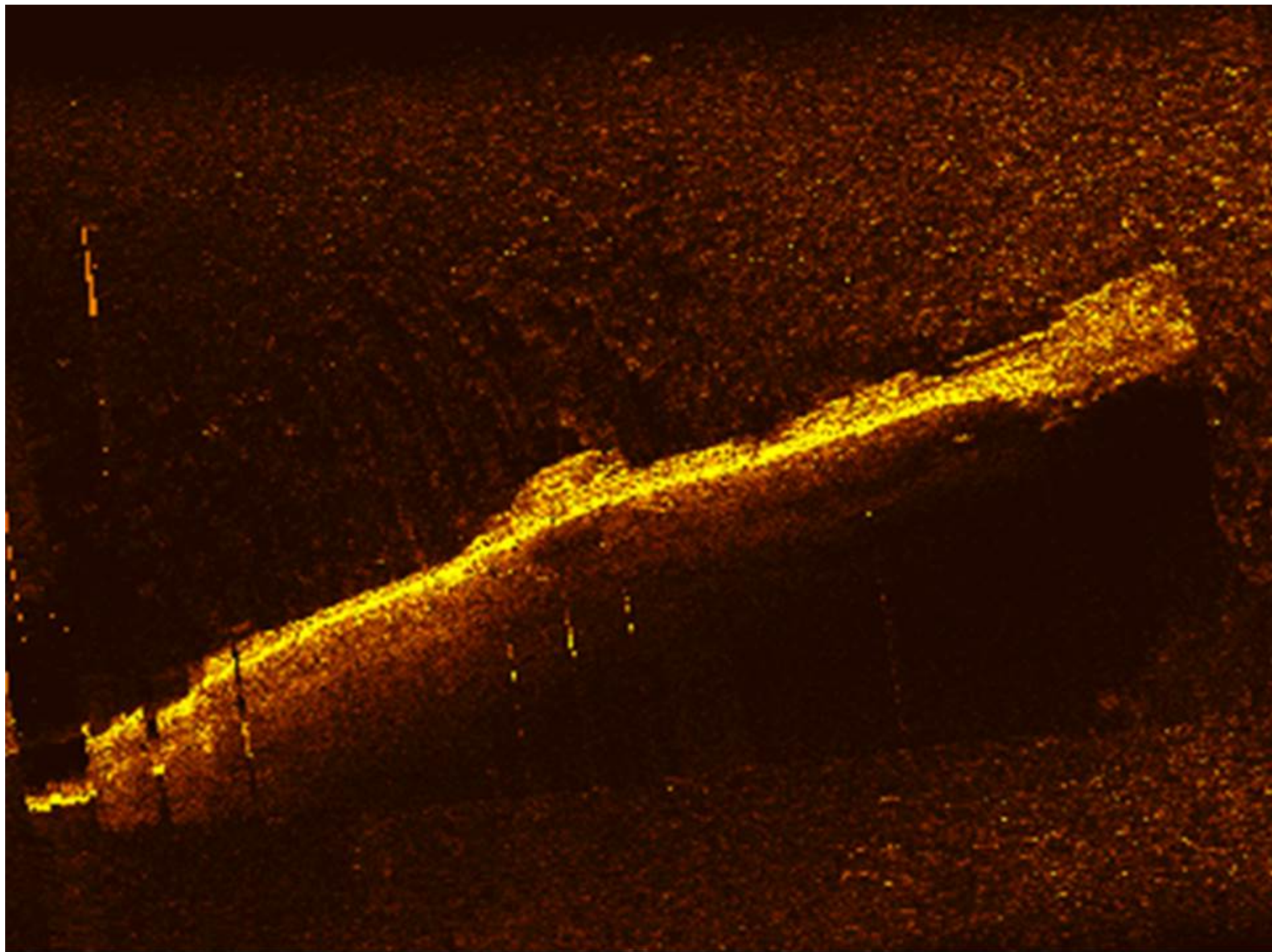
Mission Statement: Conduct a training mission over the S-37 Submarine wreck adjacent to the SSTC.

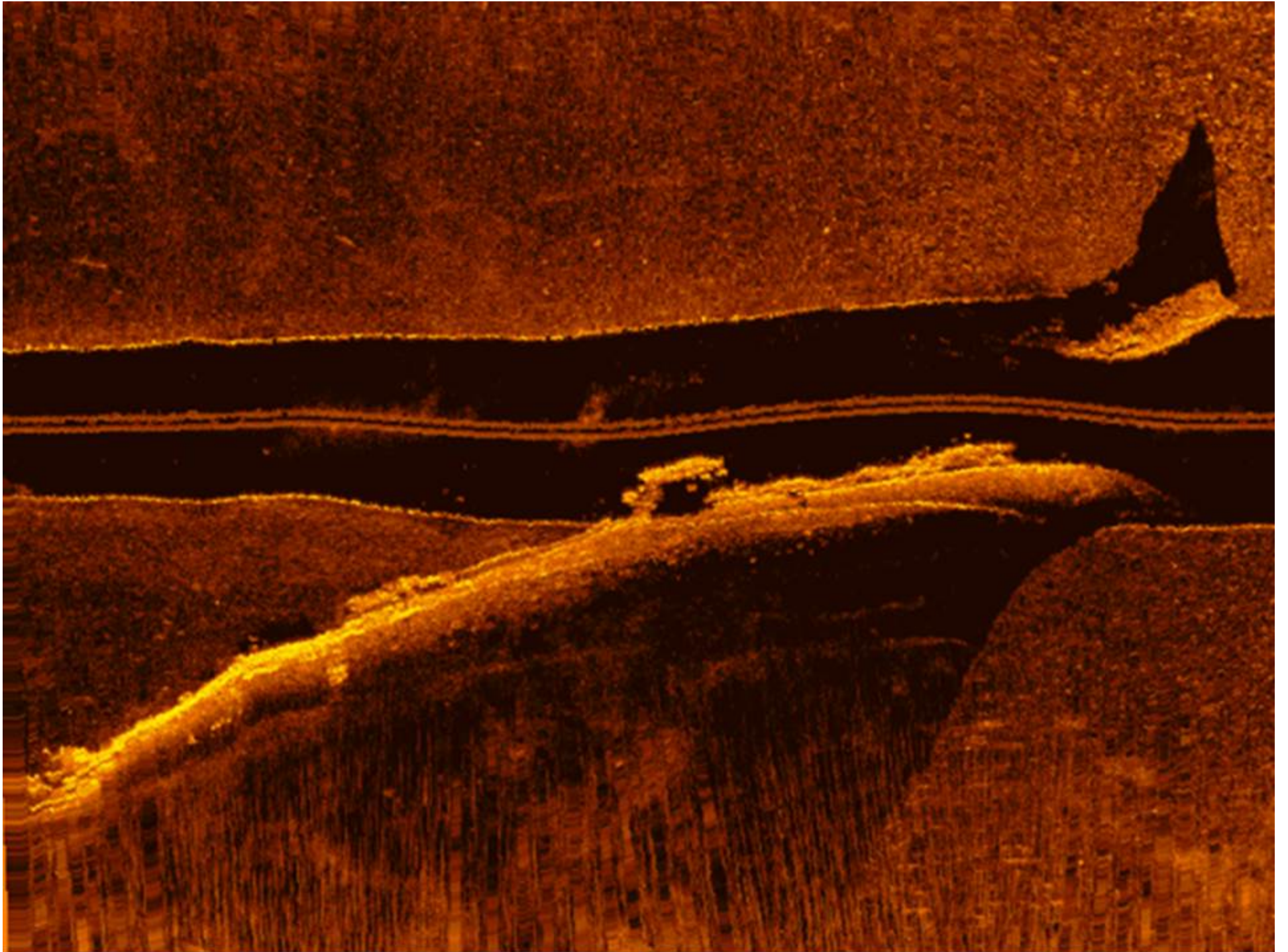
Concept of Operation: Training exercises to gain bathymetric information over a submerged submarine wreck.

Assets: 1x IVER UUV











SALVAGED PROPS — Divers Frank Ball, left, and Robert Gowdy show one of two 600-pound propellers they salvaged from a sunken submarine.

Addl info on S-37

- <http://www.cawreckdivers.org/wrecks/S37.htm>
- [https://en.wikipedia.org/wiki/USS_S-37_\(SS-142\)](https://en.wikipedia.org/wiki/USS_S-37_(SS-142))
- <http://www.pigboats.com/ww2/s37.html>